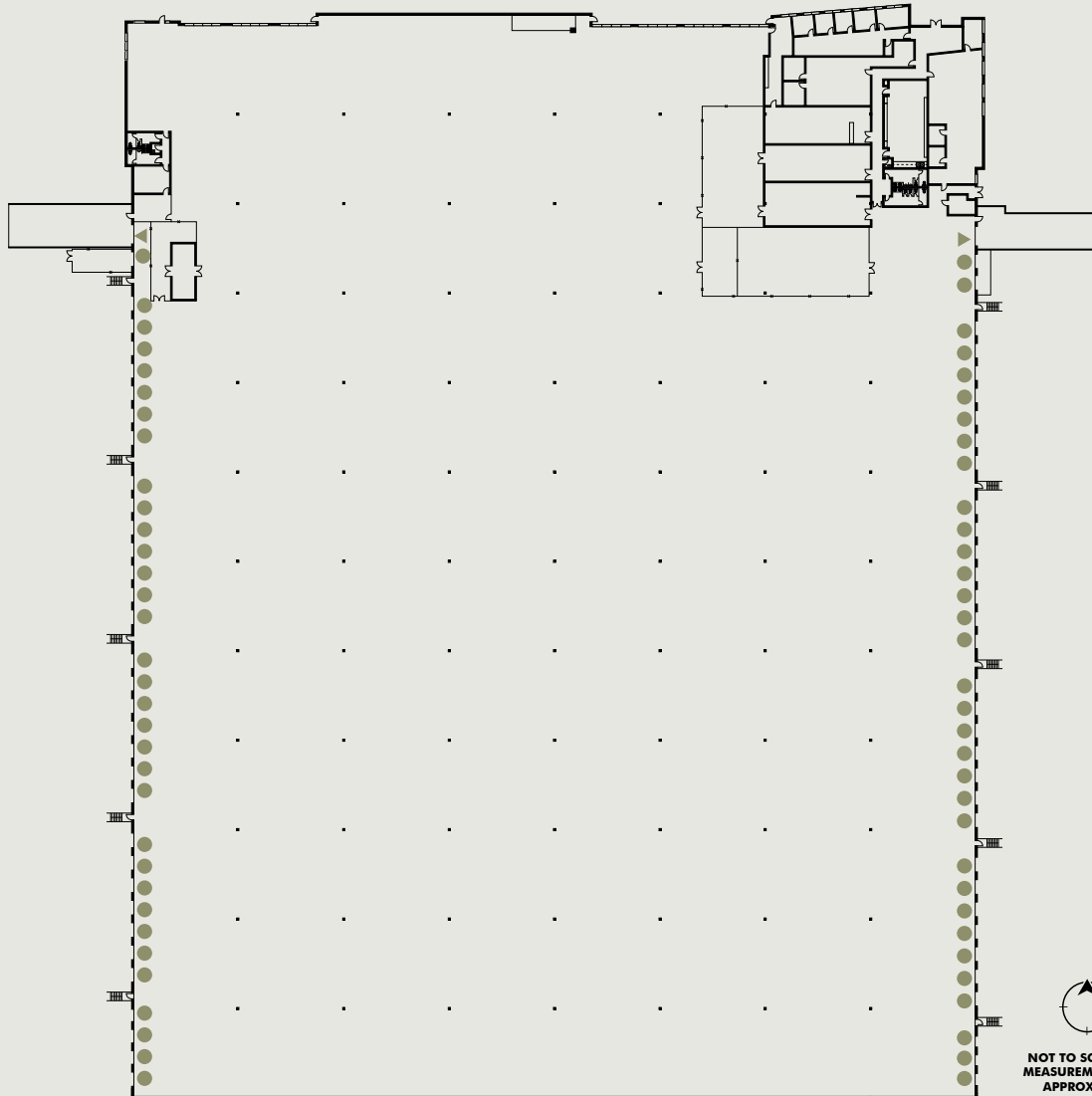
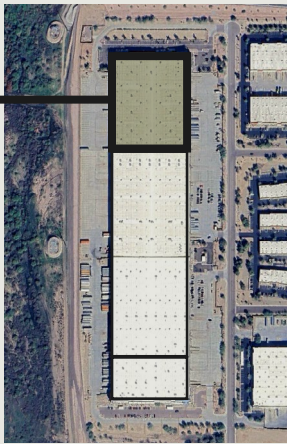


# COLDWATER DEPOT

±302,609 SF

● DOCK DOORS ▲ GRADE LEVEL DOORS



## SUITE 300

Building Size: ±1,032,148 SF

Available Space: ±302,609 SF

Office SF: ±9,020 SF

Clear Height: ±32'

Loading Dock Doors: 66

Grade Level Doors: 2

Power: 1,600 Amps, 277/480v

Column Spacing: ±60' x ±52'

Car Spaces: 140

Trailer Parking: 161

Sprinkler System: ESFR

Cooling: EVAP Cooled & RTU (Office)



NOT TO SCALE, ALL  
MEASUREMENTS ARE  
APPROXIMATE