

COLDWATER DEPOT



±302,609 SF FOR LEASE

1100 N. 127th Avenue, Suite 300 | Avondale, AZ

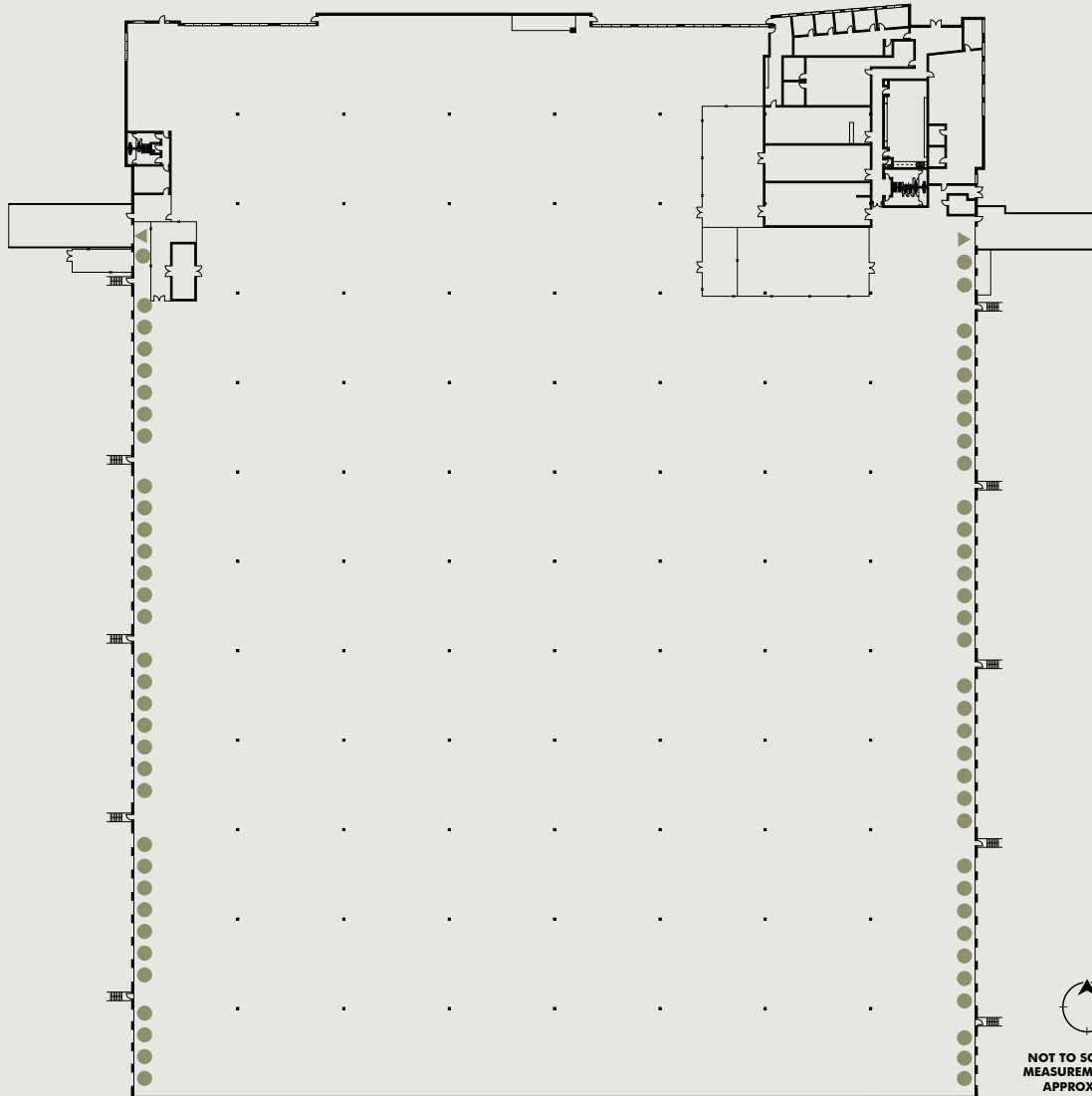


CBRE

COLDWATER DEPOT

±302,609 SF

● DOCK DOORS ▲ GRADE LEVEL DOORS



NOT TO SCALE, ALL
MEASUREMENTS ARE
APPROXIMATE

SUITE 300

Building Size: ±1,032,148 SF

Available Space: ±302,609 SF

Office SF: ±9,020 SF

Clear Height: ±32'

Loading Dock Doors: 66

Grade Level Doors: 2

Power: 1,600 Amps, 277/480v

Column Spacing: ±60' x ±52'

Car Spaces: 140

Trailer Parking: 161

Sprinkler System: ESFR

Cooling: EVAP Cooled & RTU (Office)



COLDWATER DEPOT

1100 N. 127th Avenue, Suite 300
Avondale, AZ



Immediate Access to I-10 Freeway



Quick Access to the Loop 101 & 303 Freeway



5 Minutes to Phoenix Goodyear Airport



Numerous Retail Amenities within 5 Miles



NOT TO SCALE, ALL
MEASUREMENTS ARE
APPROXIMATE

CONTACT

DAN CALIHAN

Executive Vice President, SIOR

602.617.1547

Dan.Calihan@cbre.com

PAT FEENEY, JR.

Executive Vice President, SIOR

602.538.3257

Pat.Feeney@cbre.com

TYLER VOWELS

Senior Associate

231.384.1079

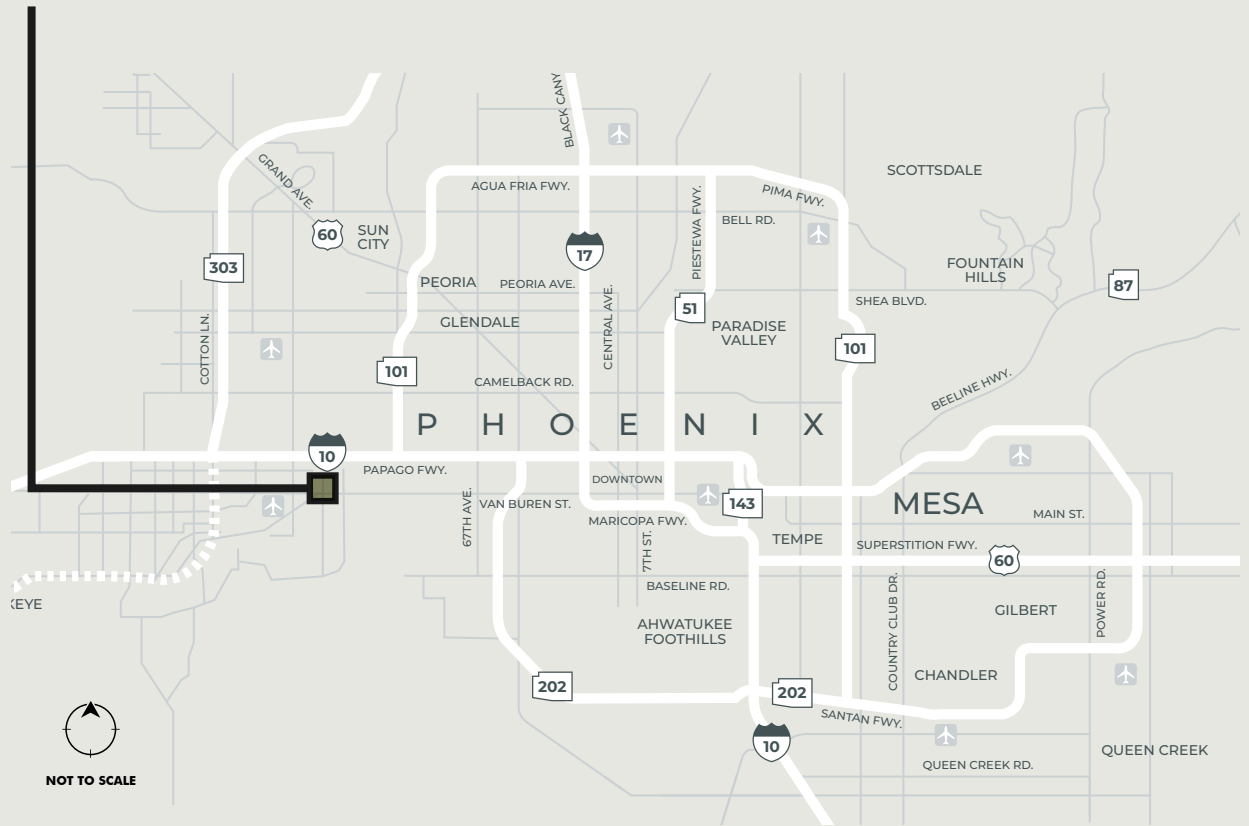
Tyler.Vowels@cbre.com

© 2024 CBRE, Inc. All rights reserved. This information has been obtained from sources believed reliable but has not been verified for accuracy or completeness. CBRE, Inc. makes no guarantee, representation or warranty and accepts no responsibility or liability as to the accuracy, completeness, or reliability of the information contained herein. You should conduct a careful, independent investigation of the property and verify all information. Any reliance on this information is solely at your own risk. CBRE and the CBRE logo are service marks of CBRE, Inc. All other marks displayed on this document are the property of their respective owners, and the use of such marks does not imply any affiliation with or endorsement of CBRE. Photos herein are the property of their respective owners. Use of these images without the express written consent of the owner is prohibited.



COLDWATER DEPOT

1100 N. 127th Avenue, Suite 300
Avondale, AZ



DEMOGRAPHICS WITHIN A 10 MILE RADIUS | SOURCE: ESRI, 2024



735,369 Population



33.1 Median Age



10,687 Businesses



20% Some College



\$80,755 Median Household Income



33% Bachelor's or Higher