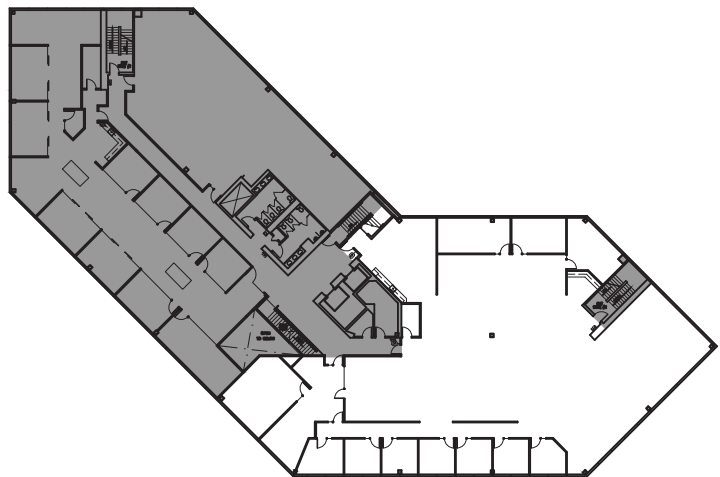


**SUITE 3/200**  
 10,385 RSF  
*(can be demised to  
 3,764 or 6,621 RSF)*



OWNED AND MANAGED BY:

FOR MORE INFORMATION, CONTACT:



**Mike George**  
 +1 425 586 5618  
 mgeorge@nai-psp.com

**Scott Sulman**  
 +1 425 586 5647  
 ssulman@nai-psp.com

