

# CORPORATE CAMPUS EAST

## BUILDING 3055 / SUITE 108

±3,808 RSF | AVAILABLE MAY 2024



FOR MORE INFO  
PLEASE CONTACT

**SCOTT DAVIS**

EXECUTIVE VICE PRESIDENT

+1 425 941 7573

SCOTT.DAVIS@CBRE.COM

**ROBERT BAKER**

TRANSACTION SPECIALIST

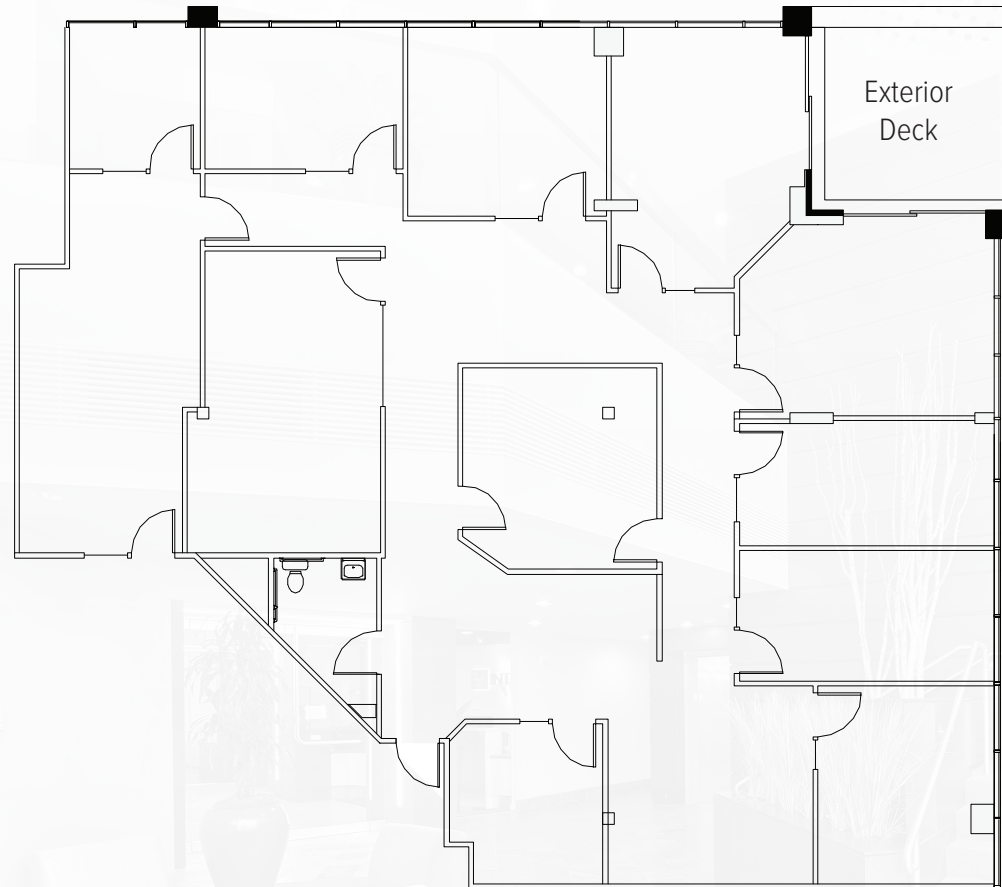
+1 425 462 6974

ROBERT.BAKER@CBRE.COM

# CBRE



Lake Washington  
PARTNERS



Not to Scale

© 2023 CBRE, Inc. All rights reserved. This information has been obtained from sources believed reliable, but has not been verified for accuracy or completeness. You should conduct a careful, independent investigation of the property and verify all information. Any reliance on this information is solely at your own risk. CBRE and the CBRE logo are service marks of CBRE, Inc. All other marks displayed on this document are the property of their respective owners, and the use of such logos does not imply any affiliation with or endorsement of CBRE. Photos herein are the property of their respective owners. Use of these images without the express written consent of the owner is prohibited. SE 11.9.2023