

CORPORATE CAMPUS EAST

BUILDING 3055 / SUITE 203

AS-BUILT FLOORPLAN | 4,419 RSF | AVAILABLE NOW



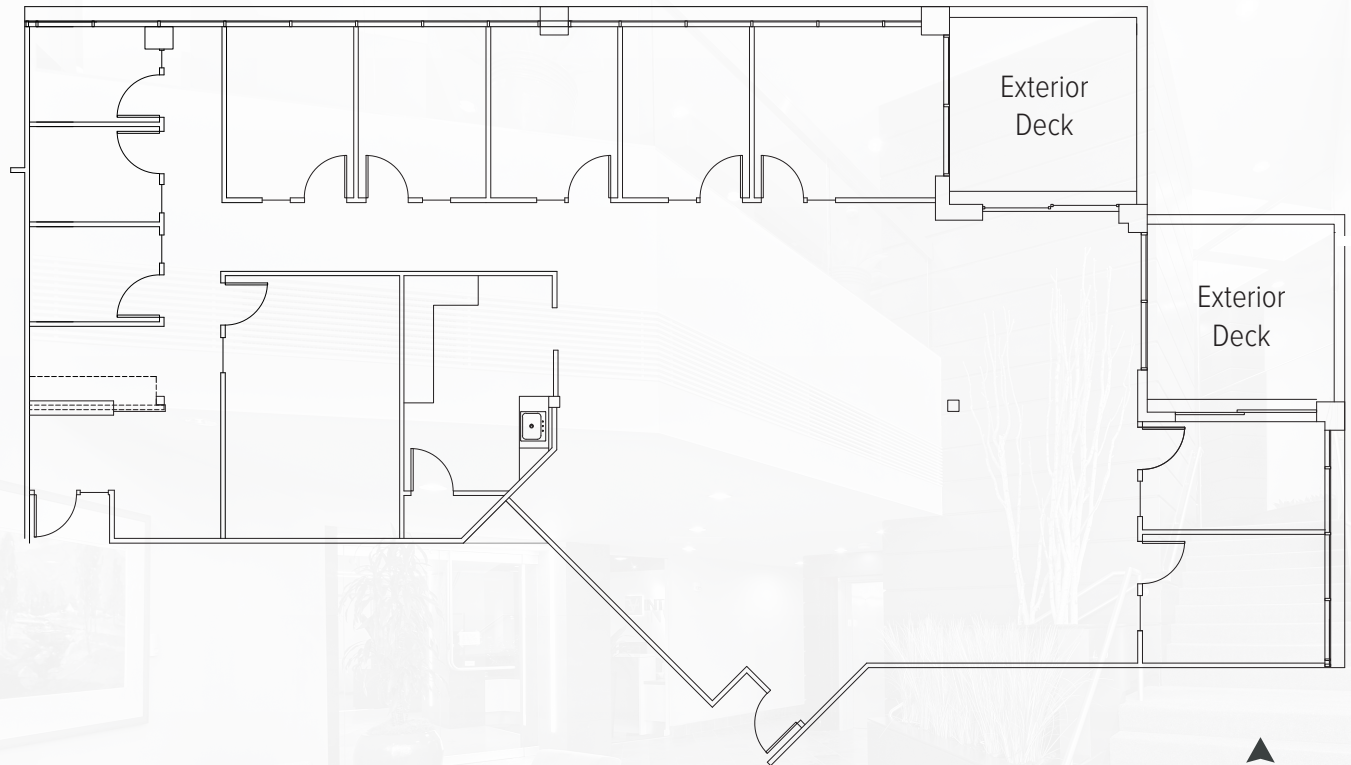
FOR MORE INFO
PLEASE CONTACT

SCOTT DAVIS

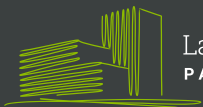
EXECUTIVE VICE PRESIDENT
+1 425 941 7573
SCOTT.DAVIS@CBRE.COM

ROBERT BAKER

TRANSACTION SPECIALIST
+1 425 462 6974
ROBERT.BAKER@CBRE.COM



CBRE



Lake Washington
PARTNERS

© 2022 CBRE, Inc. All rights reserved. This information has been obtained from sources believed reliable, but has not been verified for accuracy or completeness. You should conduct a careful, independent investigation of the property and verify all information. Any reliance on this information is solely at your own risk. CBRE and the CBRE logo are service marks of CBRE, Inc. All other marks displayed on this document are the property of their respective owners, and the use of such logos does not imply any affiliation with or endorsement of CBRE. Photos herein are the property of their respective owners. Use of these images without the express written consent of the owner is prohibited. 4-29-22MR

CORPORATE CAMPUS EAST

BUILDING 3055 / SUITE 203

MARKET READY PLAN | 4,419 RSF | AVAILABLE NOW



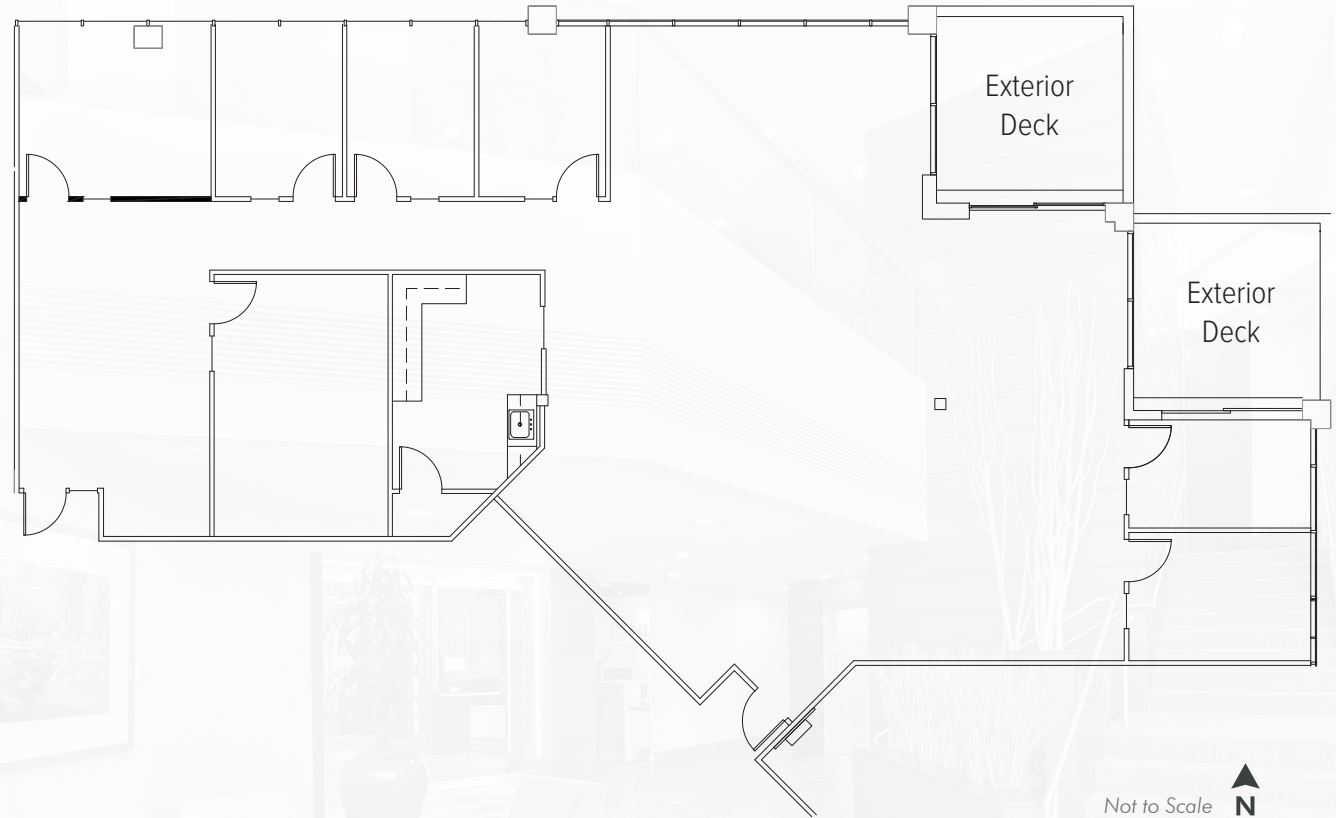
FOR MORE INFO
PLEASE CONTACT


SCOTT DAVIS

EXECUTIVE VICE PRESIDENT
+1 425 941 7573
SCOTT.DAVIS@CBRE.COM

ROBERT BAKER

TRANSACTION SPECIALIST
+1 425 462 6974
ROBERT.BAKER@CBRE.COM



Not to Scale 

CBRE



© 2022 CBRE, Inc. All rights reserved. This information has been obtained from sources believed reliable, but has not been verified for accuracy or completeness. You should conduct a careful, independent investigation of the property and verify all information. Any reliance on this information is solely at your own risk. CBRE and the CBRE logo are service marks of CBRE, Inc. All other marks displayed on this document are the property of their respective owners, and the use of such logos does not imply any affiliation with or endorsement of CBRE. Photos herein are the property of their respective owners. Use of these images without the express written consent of the owner is prohibited. 11-28-22MR

CORPORATE CAMPUS EAST

BUILDING 3025 / SUITE 105

AS-BUILT FLOORPLAN | ±1,450 RSF | AVAILABLE MARCH 1, 2023



FOR MORE INFO
PLEASE CONTACT

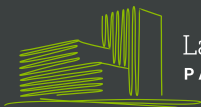
SCOTT DAVIS

EXECUTIVE VICE PRESIDENT
+1 425 941 7573
SCOTT.DAVIS@CBRE.COM

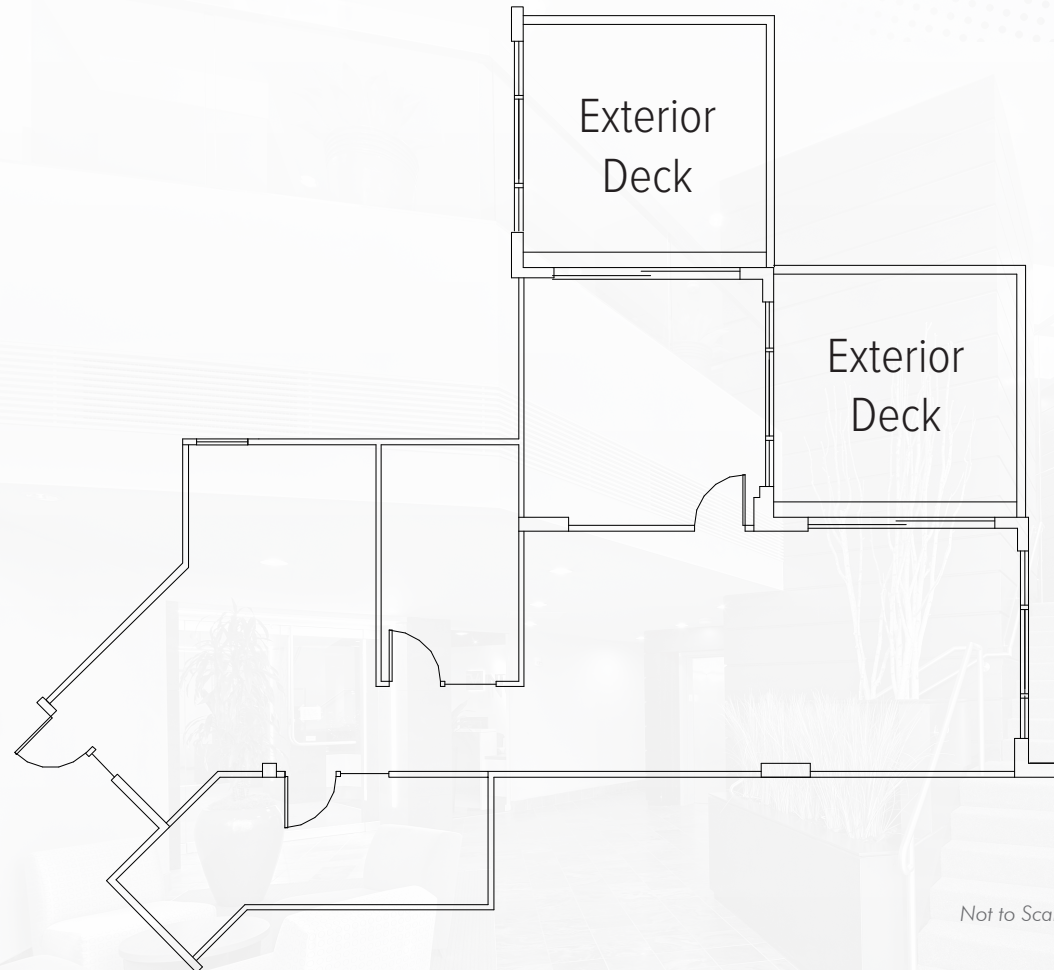
ROBERT BAKER

TRANSACTION SPECIALIST
+1 425 462 6974
ROBERT.BAKER@CBRE.COM

CBRE



Lake Washington
PARTNERS



Not to Scale



© 2022 CBRE, Inc. All rights reserved. This information has been obtained from sources believed reliable, but has not been verified for accuracy or completeness. You should conduct a careful, independent investigation of the property and verify all information. Any reliance on this information is solely at your own risk. CBRE and the CBRE logo are service marks of CBRE, Inc. All other marks displayed on this document are the property of their respective owners, and the use of such logos does not imply any affiliation with or endorsement of CBRE. Photos herein are the property of their respective owners. Use of these images without the express written consent of the owner is prohibited. 10/7/22 MR

CORPORATE CAMPUS EAST

BUILDING 3025 / SUITE 105

MARKET READY PLAN | ±1,450 RSF | AVAILABLE MARCH 1, 2023



FOR MORE INFO
PLEASE CONTACT

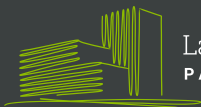
SCOTT DAVIS

EXECUTIVE VICE PRESIDENT
+1 425 941 7573
SCOTT.DAVIS@CBRE.COM

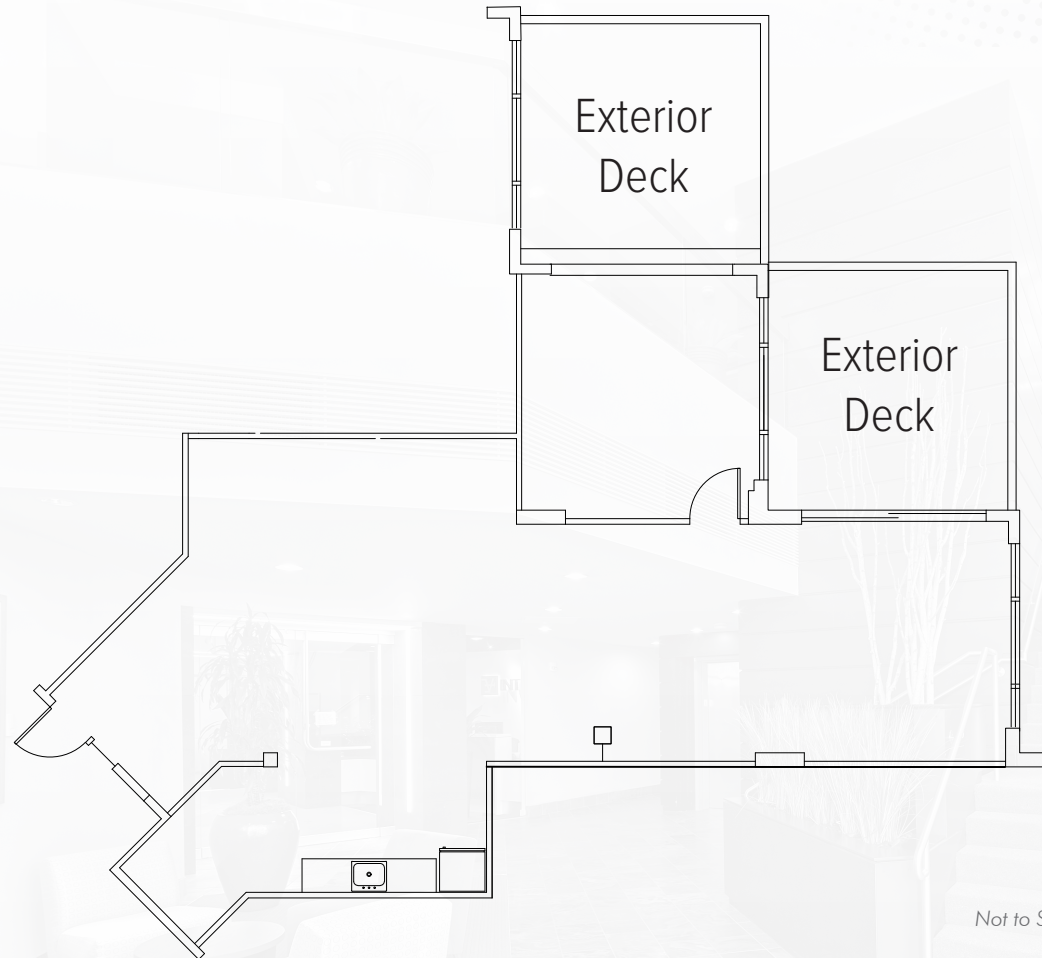
ROBERT BAKER

TRANSACTION SPECIALIST
+1 425 462 6974
ROBERT.BAKER@CBRE.COM

CBRE



Lake Washington
PARTNERS



Not to Scale



© 2022 CBRE, Inc. All rights reserved. This information has been obtained from sources believed reliable, but has not been verified for accuracy or completeness. You should conduct a careful, independent investigation of the property and verify all information. Any reliance on this information is solely at your own risk. CBRE and the CBRE logo are service marks of CBRE, Inc. All other marks displayed on this document are the property of their respective owners, and the use of such logos does not imply any affiliation with or endorsement of CBRE. Photos herein are the property of their respective owners. Use of these images without the express written consent of the owner is prohibited. 11/28/22 MR

CORPORATE CAMPUS EAST

BUILDING 3075 / SUITE 100/205

AS-BUILT FLOORPLAN | ±39,331 RSF | AVAILABLE APRIL 1, 2023



FOR MORE INFO
PLEASE CONTACT

SCOTT DAVIS

EXECUTIVE VICE PRESIDENT

+1 425 941 7573

SCOTT.DAVIS@CBRE.COM

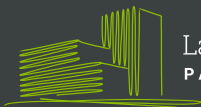
ROBERT BAKER

TRANSACTION SPECIALIST

+1 425 462 6974

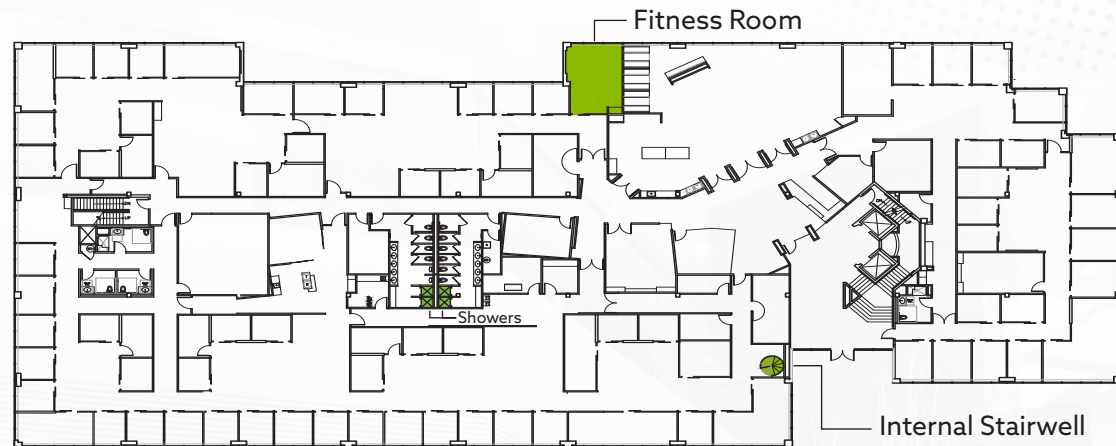
ROBERT.BAKER@CBRE.COM

CBRE

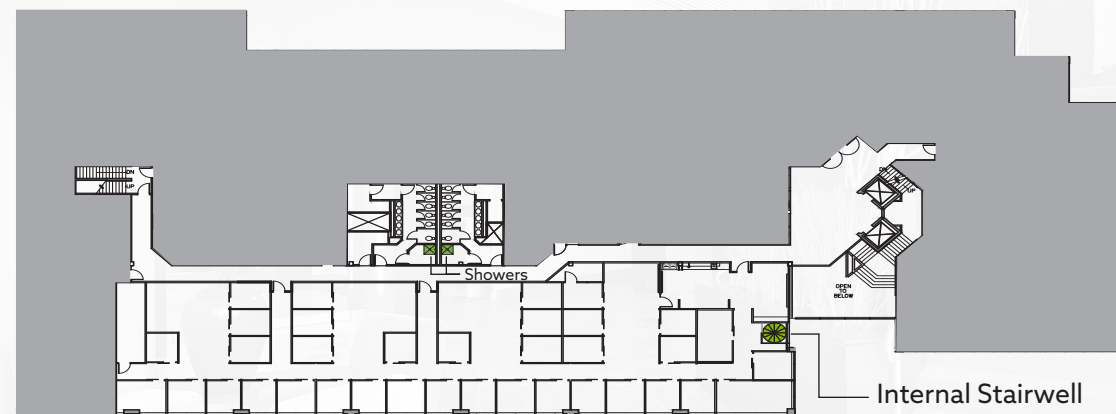


Lake Washington
PARTNERS

SUITE 100:
30,939 SF



SUITE 205:
8,382 SF



▲
N
Not to Scale

© 2022 CBRE, Inc. All rights reserved. This information has been obtained from sources believed reliable, but has not been verified for accuracy or completeness. You should conduct a careful, independent investigation of the property and verify all information. Any reliance on this information is solely at your own risk. CBRE and the CBRE logo are service marks of CBRE, Inc. All other marks displayed on this document are the property of their respective owners, and the use of such logos does not imply any affiliation with or endorsement of CBRE. Photos herein are the property of their respective owners. Use of these images without the express written consent of the owner is prohibited. 5-20-22AR