

CORPORATE CAMPUS EAST

BUILDING 3075 / SUITE 100/205

AS-BUILT FLOORPLAN | ±39,331 RSF | AVAILABLE APRIL 1, 2023



FOR MORE INFO
PLEASE CONTACT

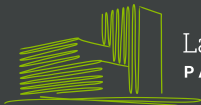
SCOTT DAVIS

EXECUTIVE VICE PRESIDENT
+1 425 941 7573
SCOTT.DAVIS@CBRE.COM

ROBERT BAKER

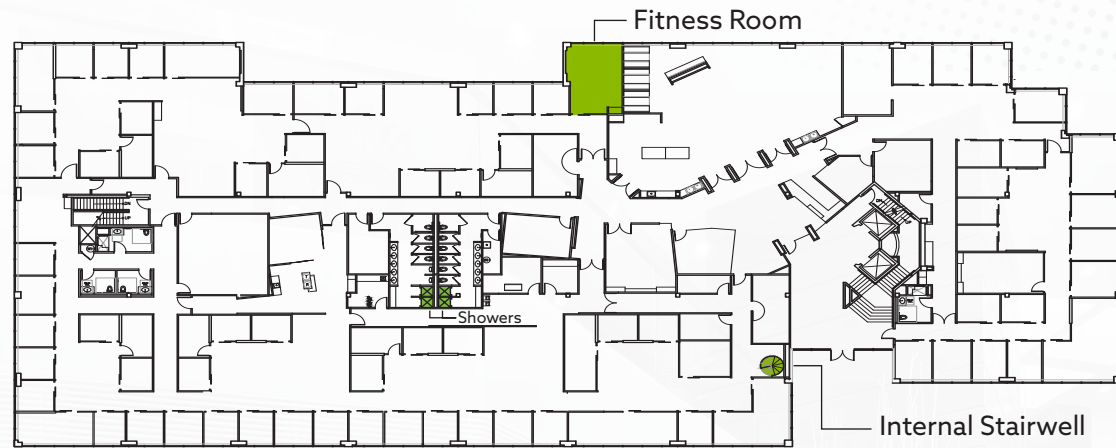
TRANSACTION SPECIALIST
+1 425 462 6974
ROBERT.BAKER@CBRE.COM

CBRE

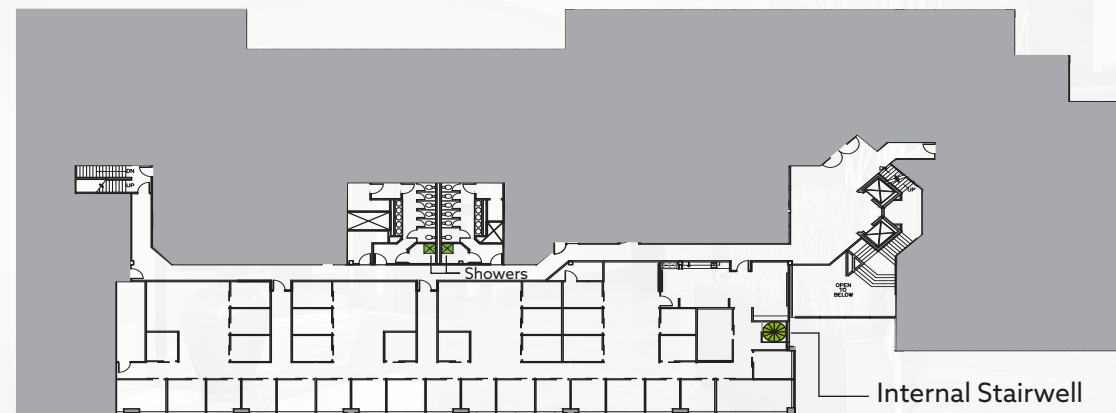


Lake Washington
PARTNERS

SUITE 100:
30,939 SF



SUITE 205:
8,382 SF



▲
N
Not to Scale

© 2022 CBRE, Inc. All rights reserved. This information has been obtained from sources believed reliable, but has not been verified for accuracy or completeness. You should conduct a careful, independent investigation of the property and verify all information. Any reliance on this information is solely at your own risk. CBRE and the CBRE logo are service marks of CBRE, Inc. All other marks displayed on this document are the property of their respective owners, and the use of such logos does not imply any affiliation with or endorsement of CBRE. Photos herein are the property of their respective owners. Use of these images without the express written consent of the owner is prohibited. 5-20-22AR