



L & L Poplar

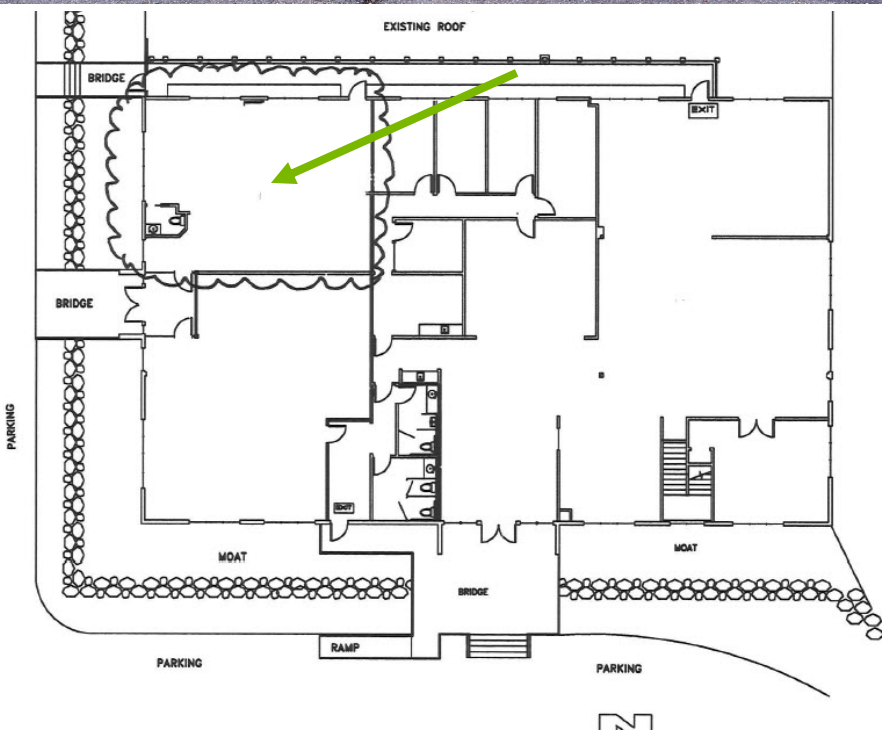
12611 Northup Way, Bellevue WA

SPACE FOR LEASE



Suite 220

- 1,265 SF
- Available December 1, 2021
- Convenient freeway access to 405 and 520
- Minutes to downtown Bellevue
- Locally owned and managed by Lake Washington Partners



Joel M. Ostroff
Stanley Real Estate, Inc.
2101 4th Avenue, Suite 310
Seattle, WA 98121
206-441-1080 x3
joel@stanleyre.com

