



L & L Poplar

12611 Northup Way, Bellevue WA

SPACE FOR LEASE



Suite 220

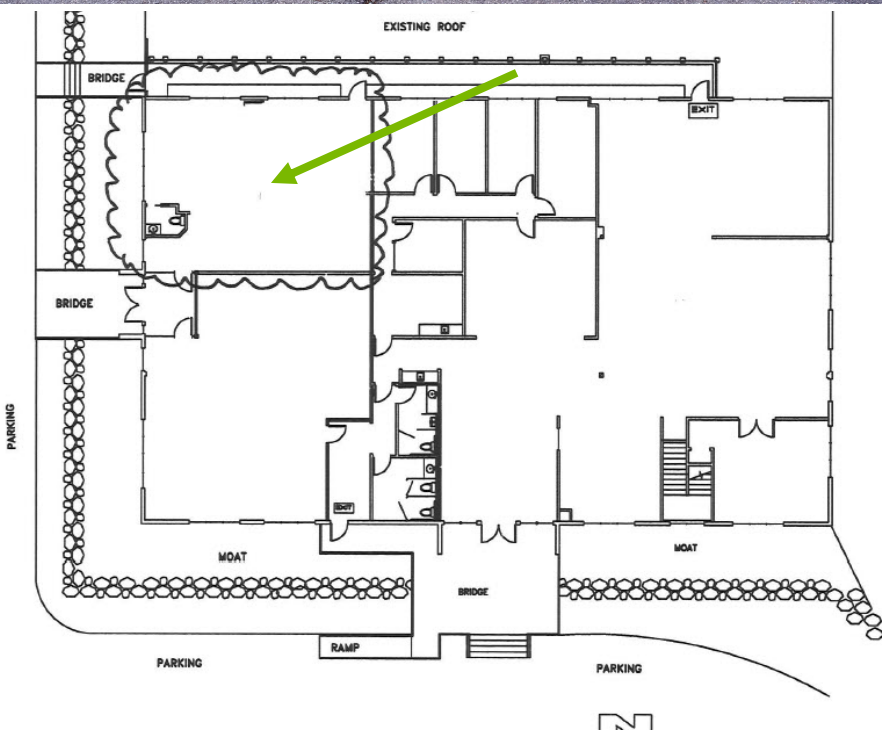
1,265 SF

Available December 1, 2022

Convenient freeway access
to 405 and 520

Minutes to downtown
Bellevue

Locally owned and
managed by Lake
Washington Partners



Joel M. Ostroff
Stanley Real Estate, Inc.
2101 4th Avenue, Suite 310
Seattle, WA 98121
206-441-1080 x3
joel@stanleyre.com



STANLEY REAL ESTATE, INC.