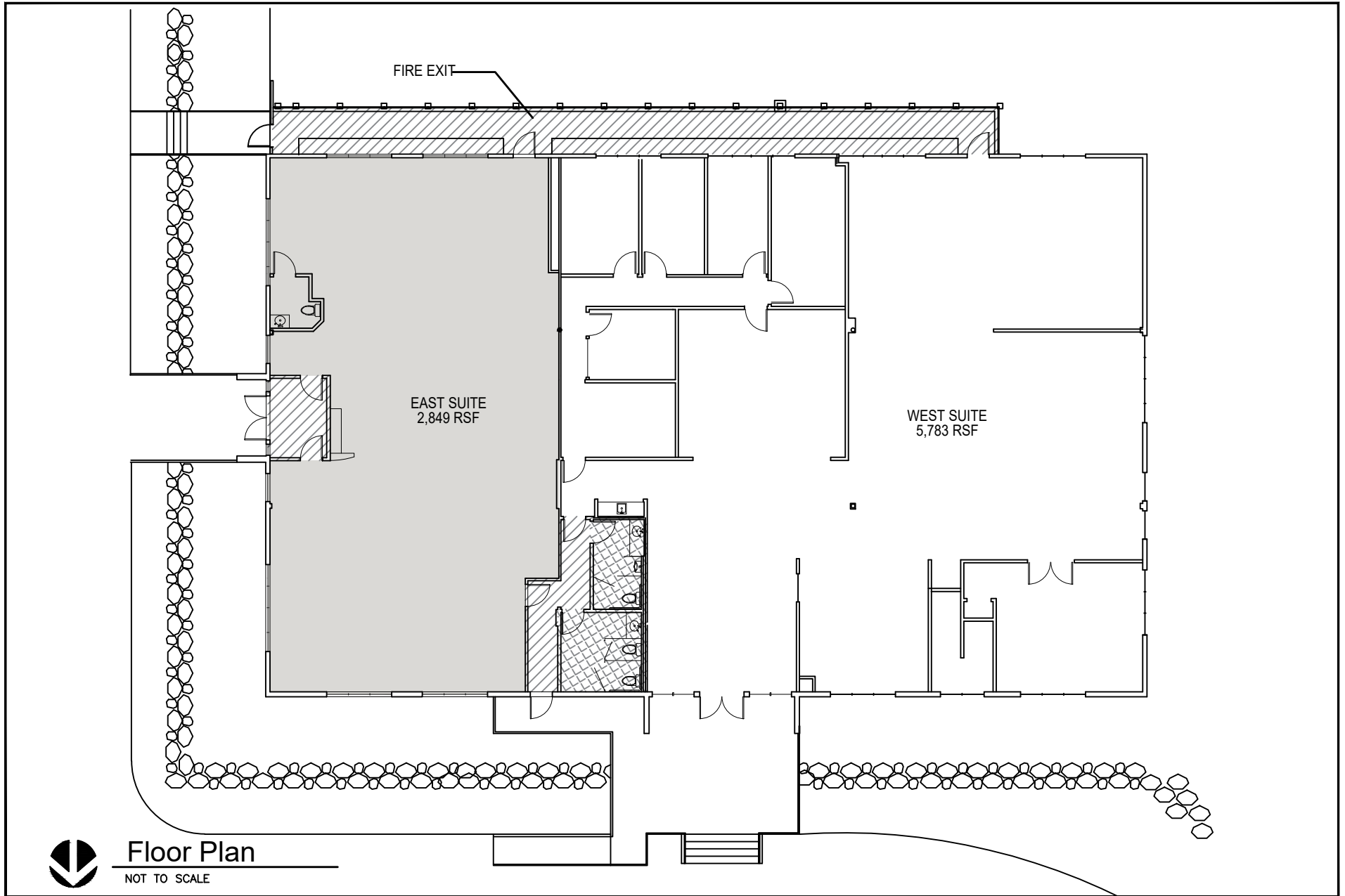


Dwg: J:\MAINTAINED FACILITIES\BELLEVUE\12611 NORTHUP WAY (L&L POPLAR) \SCENARIOS\12611 NORTHUP WAY (POPLAR) SCENARIO 1.DWG  
Author: ROBERTO BUENO Date/Time: 2/28/2022 2:56 PM Pen Table: JPC STD.CTB



**JPC ARCHITECTS**  
909 112th Avenue NE Suite 204  
Bellevue, WA 98004

**L&L Poplar**  
**Upper Floor Suites**

L&L POPLAR  
12611 Northup Way  
Bellevue, WA 98005

RB  
RB,TL  
22-0150  
02/28/2022

**SC-1**  
© 2022, JPC ARCHITECTS PLLC