



New Space for Lease

J&J ALDERWOOD

2,349 RSF

Available December 31st, 2022

Locally owned and managed by Lake Washington Partners

FEATURES



20 miles north of
downtown Seattle

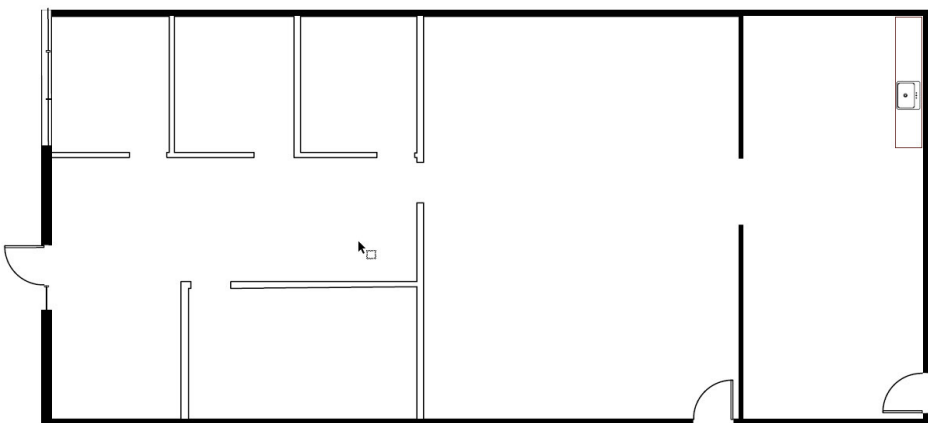


Adjacent to
Alderwood Mall



Available December
31st, 2022

18905 33rd Ave West, Suite 111 & 112 Lynnwood, WA 98036



1" = 4'

For further inquiries please contact Property Manager, Joel Ostroff

✉ joel@stanleyre.com 🌐 www.stanleyre.com ☎ 206.441.1080 X 3



Lake Washington
PARTNERS



STANLEY REAL ESTATE, INC.

18905 33rd Ave West, Suite 111 & 112 Lynnwood, WA 98036