

FOR LEASE

GATEWAY 405



11711 SE 8TH STREET • BELLEVUE, WA 98005



Lake Washington
PARTNERS

CBRE

PROPERTY HIGHLIGHTS



High image boutique office building



3 /1,000 RSF parking ratio



Great access to I-405 and I-90



Minutes from downtown Bellevue and Eastgate



Hotels and restaurants nearby



Natural setting



Deli within walking distance



Across the street from Wilburton Park & Ride and less than a mile to future light rail station

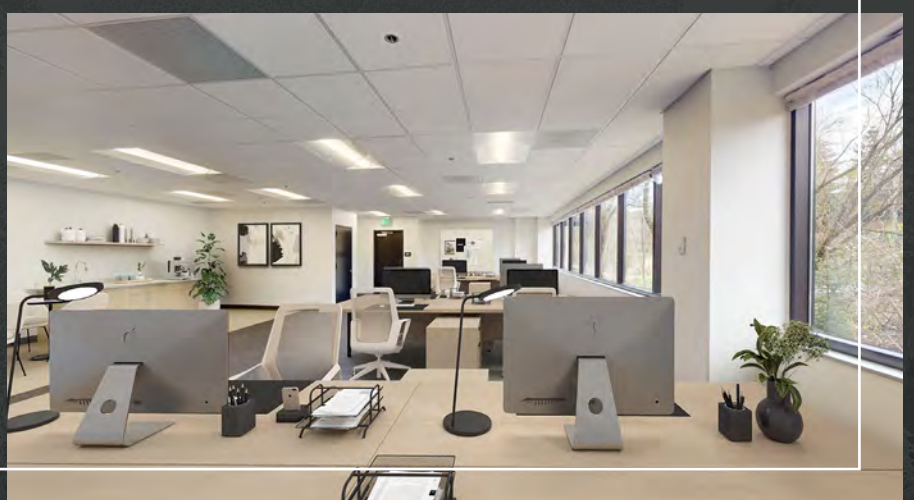


Mercer Slough Nature Park walking and bike trails nearby

2025 ESTIMATED
OPERATING EXPENSES
\$15.05/SF

AVAILABLE SPACES

SUITE	±RSF	AVAILABILITY	COMMENTS
110	2,557	Now	Market Ready with prominent lobby exposure View Virtual Tour
205	1,104	Now	Market Ready with efficient private office layout View Virtual Tour
310	2,235	Now	Market Ready with mix of offices and open office View Virtual Tour



THE LOCATION

DOWNTOWN SEATTLE



The Bellin Club

112TH AVE SE

SE 8TH STREET

GATEWAY 405



Wilbur Park & Ride





GATEWAY 405



FOR MORE INFO PLEASE CONTACT

JEFF JOCHUMS

EXECUTIVE VICE PRESIDENT

+1 425 462 6971

JEFF.JOCHUMS@CBRE.COM

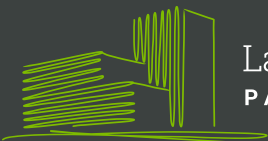
ROBERT BAKER

TRANSACTION SPECIALIST

+1 425 462 6974

ROBERT.BAKER@CBRE.COM

CBRE, INC. | 929 108TH AVE NE | SUITE 700 | BELLEVUE, WA 98004



Lake Washington
PARTNERS

CBRE

© 2026 CBRE, Inc. All rights reserved. This information has been obtained from sources believed reliable, but has not been verified for accuracy or completeness. You should conduct a careful, independent investigation of the property and verify all information. Any reliance on this information is solely at your own risk. CBRE and the CBRE logo are service marks of CBRE, Inc. All other marks displayed on this document are the property of their respective owners. Photos herein are the property of their respective owners. Use of these images without the express written consent of the owner is prohibited. PMStudio_October_2025

GATEWAY 405

SUITE 110 / 2,557 SF

MARKET-READY



FOR MORE INFO
PLEASE CONTACT

JEFF JOCHUMS

EXECUTIVE VICE PRESIDENT

+1 425 462 6971

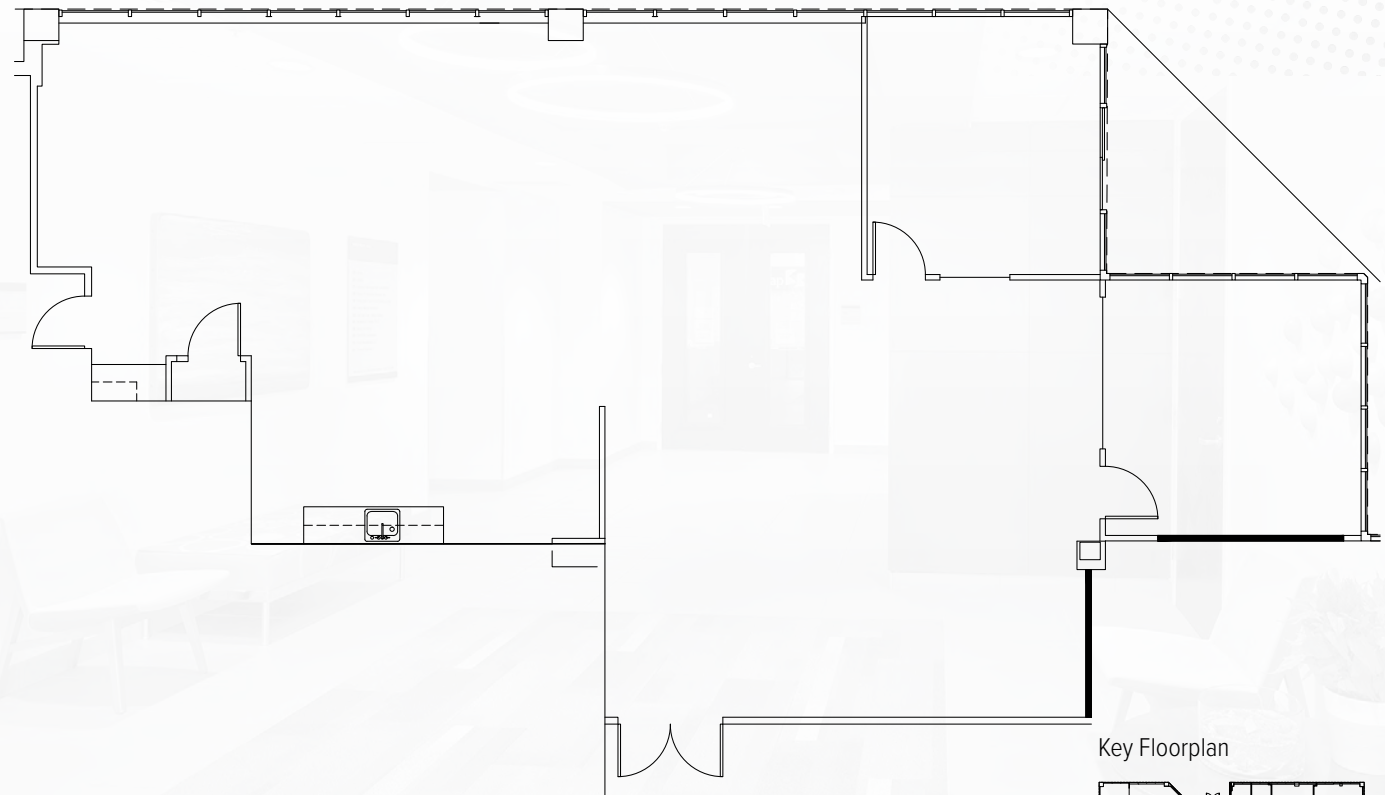
JEFF.JOCHUMS@CBRE.COM

ROBERT BAKER

TRANSACTION SPECIALIST

+1 425 462 6974

ROBERT.BAKER@CBRE.COM

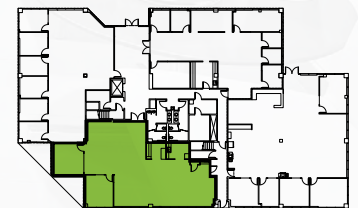


VIEW
CONCEPTUAL
FURNITURE PLAN

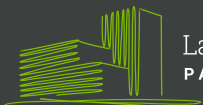


VIEW
VIRTUAL TOUR

Key Floorplan



CBRE



Lake Washington
PARTNERS

© 2025 CBRE, Inc. All rights reserved. This information has been obtained from sources believed reliable, but has not been verified for accuracy or completeness. You should conduct a careful, independent investigation of the property and verify all information. Any reliance on this information is solely at your own risk. CBRE and the CBRE logo are service marks of CBRE, Inc. All other marks displayed on this document are the property of their respective owners, and the use of such logos does not imply any affiliation with or endorsement of CBRE. Photos herein are the property of their respective owners. Use of these images without the express written consent of the owner is prohibited. PMStudio_January2026

GATEWAY 405

SUITE 110 / 2,557 SF

CONCEPTUAL FURNITURE PLAN



FOR MORE INFO
PLEASE CONTACT

JEFF JOCHUMS

EXECUTIVE VICE PRESIDENT

+1 425 462 6971

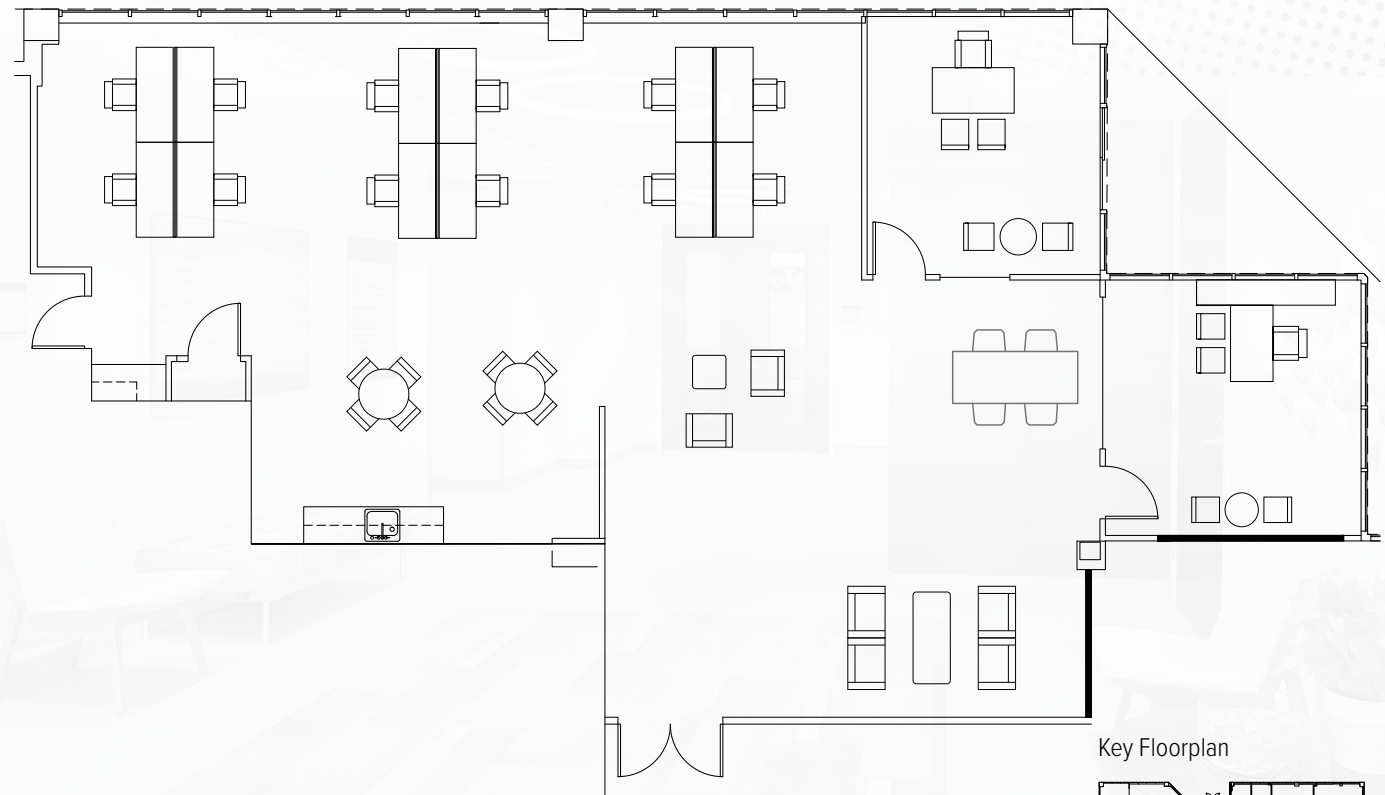
JEFF.JOCHUMS@CBRE.COM

ROBERT BAKER

TRANSACTION SPECIALIST

+1 425 462 6974

ROBERT.BAKER@CBRE.COM

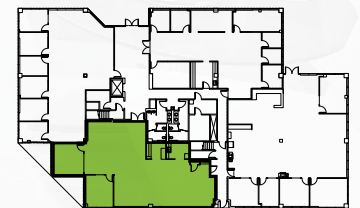


VIEW
CONCEPTUAL
FURNITURE PLAN

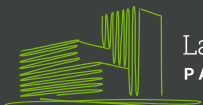


VIEW
VIRTUAL TOUR

Key Floorplan



CBRE



Lake Washington
PARTNERS

© 2025 CBRE, Inc. All rights reserved. This information has been obtained from sources believed reliable, but has not been verified for accuracy or completeness. You should conduct a careful, independent investigation of the property and verify all information. Any reliance on this information is solely at your own risk. CBRE and the CBRE logo are service marks of CBRE, Inc. All other marks displayed on this document are the property of their respective owners, and the use of such logos does not imply any affiliation with or endorsement of CBRE. Photos herein are the property of their respective owners. Use of these images without the express written consent of the owner is prohibited.PMStudio_January2026

GATEWAY 405

SUITE 205 / 1,104 SF

MARKET-READY



FOR MORE INFO
PLEASE CONTACT

JEFF JOCHUMS

EXECUTIVE VICE PRESIDENT

+1 425 462 6971

JEFF.JOCHUMS@CBRE.COM

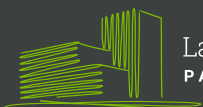
ROBERT BAKER

TRANSACTION SPECIALIST

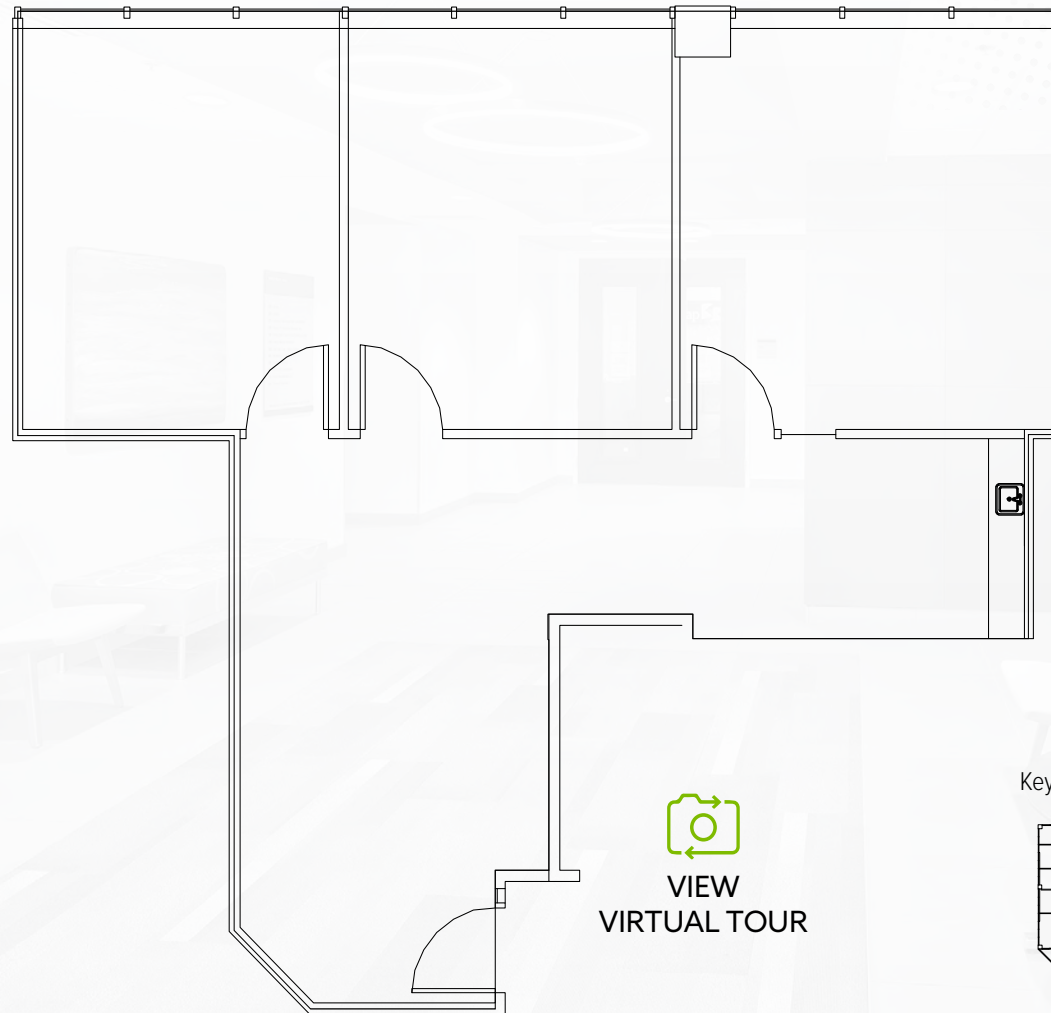
+1 425 462 6974

ROBERT.BAKER@CBRE.COM

CBRE

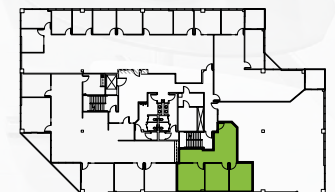


Lake Washington
PARTNERS



VIEW
VIRTUAL TOUR

Key Floorplan



© 2025 CBRE, Inc. All rights reserved. This information has been obtained from sources believed reliable, but has not been verified for accuracy or completeness. You should conduct a careful, independent investigation of the property and verify all information. Any reliance on this information is solely at your own risk. CBRE and the CBRE logo are service marks of CBRE, Inc. All other marks displayed on this document are the property of their respective owners, and the use of such logos does not imply any affiliation with or endorsement of CBRE. Photos herein are the property of their respective owners. Use of these images without the express written consent of the owner is prohibited.PMStudio_January2026

GATEWAY 405

SUITE 310 / 2,235 SF

MARKET-READY



FOR MORE INFO
PLEASE CONTACT

JEFF JOCHUMS

EXECUTIVE VICE PRESIDENT

+1 425 462 6971

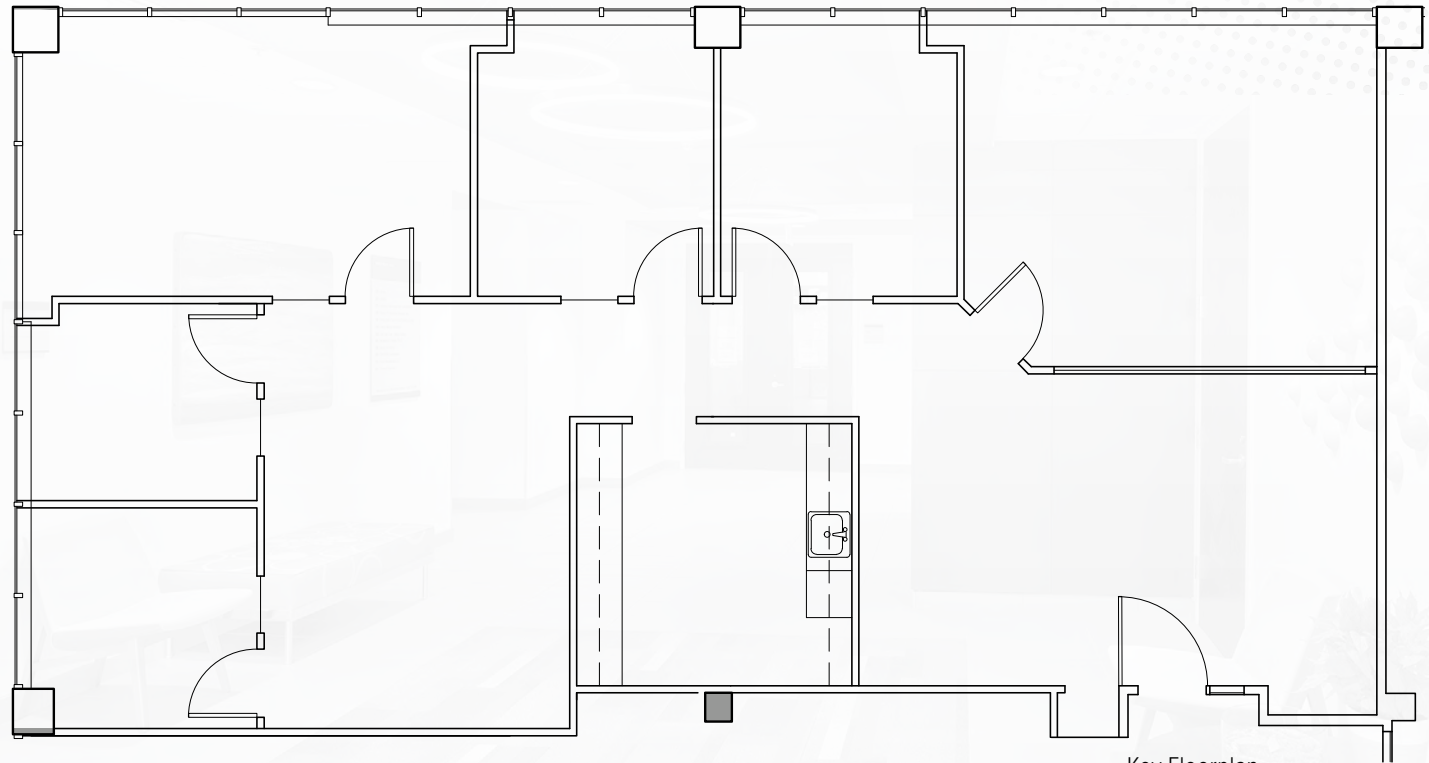
JEFF.JOCHUMS@CBRE.COM

ROBERT BAKER

TRANSACTION SPECIALIST

+1 425 462 6974

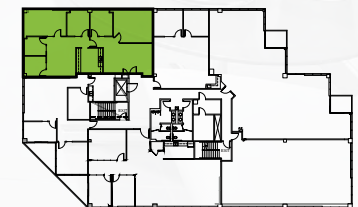
ROBERT.BAKER@CBRE.COM



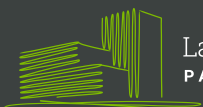
Key Floorplan



VIEW
VIRTUAL TOUR



CBRE



Lake Washington
PARTNERS

© 2025 CBRE, Inc. All rights reserved. This information has been obtained from sources believed reliable, but has not been verified for accuracy or completeness. You should conduct a careful, independent investigation of the property and verify all information. Any reliance on this information is solely at your own risk. CBRE and the CBRE logo are service marks of CBRE, Inc. All other marks displayed on this document are the property of their respective owners, and the use of such logos does not imply any affiliation with or endorsement of CBRE. Photos herein are the property of their respective owners. Use of these images without the express written consent of the owner is prohibited.PMStudio_January2026