

EASTPOINTE CORPORATE CENTER

FLOOR 3 / DEMISING PLAN

MARKET-READY SUITES WITH FLEXIBLE
CONFIGURATIONS AVAILABLE



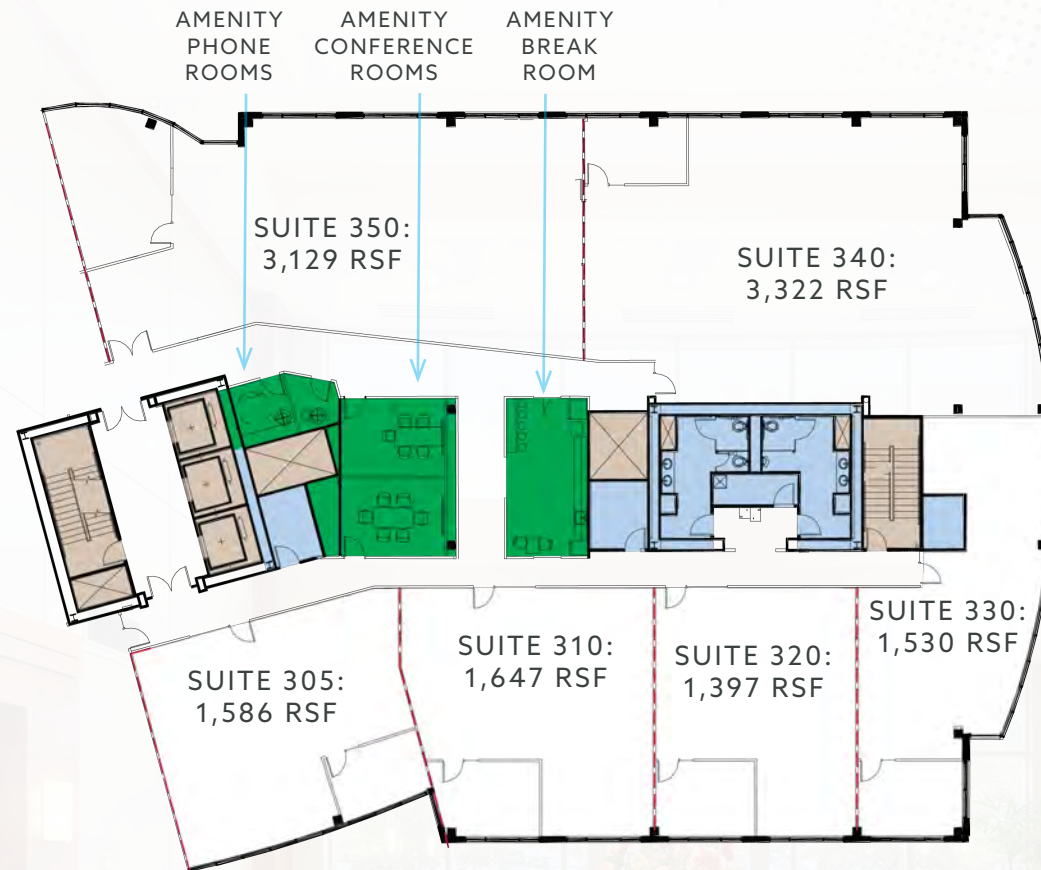
FOR MORE INFO
PLEASE CONTACT

JEFF JOCHUMS

EXECUTIVE VICE PRESIDENT
+1 425 462 6971
JEFF.JOCHUMS@CBRE.COM

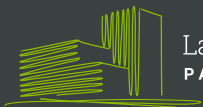
SCOTT DAVIS

EXECUTIVE VICE PRESIDENT
+1 425 941 7573
SCOTT.DAVIS@CBRE.COM



Not to Scale

CBRE



Lake Washington
PARTNERS

© 2024 CBRE, Inc. All rights reserved. This information has been obtained from sources believed reliable, but has not been verified for accuracy or completeness. You should conduct a careful, independent investigation of the property and verify all information. Any reliance on this information is solely at your own risk. CBRE and the CBRE logo are service marks of CBRE, Inc. All other marks displayed on this document are the property of their respective owners, and the use of such logos does not imply any affiliation with or endorsement of CBRE. Photos herein are the property of their respective owners. Use of these images without the express written consent of the owner is prohibited. 5-16-22RB

EASTPOINTE CORPORATE CENTER

FLOOR 3 / MARKET-READY PLAN

SAMPLE TEST-FITS



FOR MORE INFO
PLEASE CONTACT

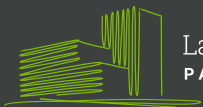
JEFF JOCHUMS

EXECUTIVE VICE PRESIDENT
+1 425 462 6971
JEFF.JOCHUMS@CBRE.COM

SCOTT DAVIS

EXECUTIVE VICE PRESIDENT
+1 425 941 7573
SCOTT.DAVIS@CBRE.COM

CBRE



Lake Washington
PARTNERS



© 2025 CBRE, Inc. All rights reserved. This information has been obtained from sources believed reliable, but has not been verified for accuracy or completeness. You should conduct a careful, independent investigation of the property and verify all information. Any reliance on this information is solely at your own risk. CBRE and the CBRE logo are service marks of CBRE, Inc. All other marks displayed on this document are the property of their respective owners, and the use of such logos does not imply any affiliation with or endorsement of CBRE. Photos herein are the property of their respective owners. Use of these images without the express written consent of the owner is prohibited. 1-6-25RB