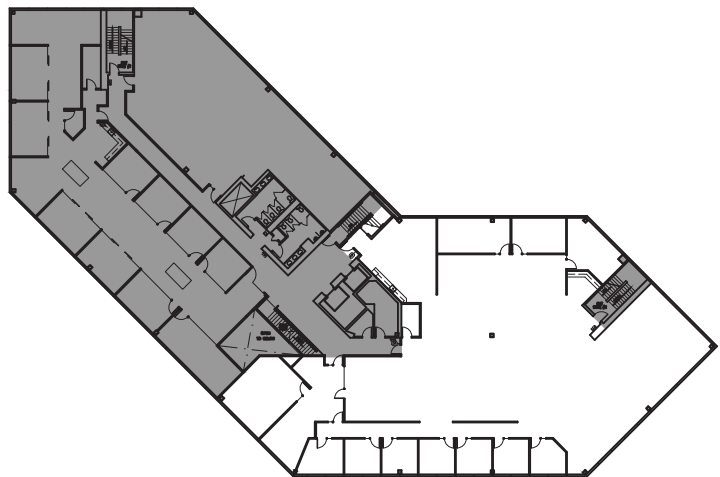


SUITE 3/200
 10,385 RSF
*(can be demised to
 3,764 or 6,621 RSF)*



OWNED AND MANAGED BY:

FOR MORE INFORMATION, CONTACT:

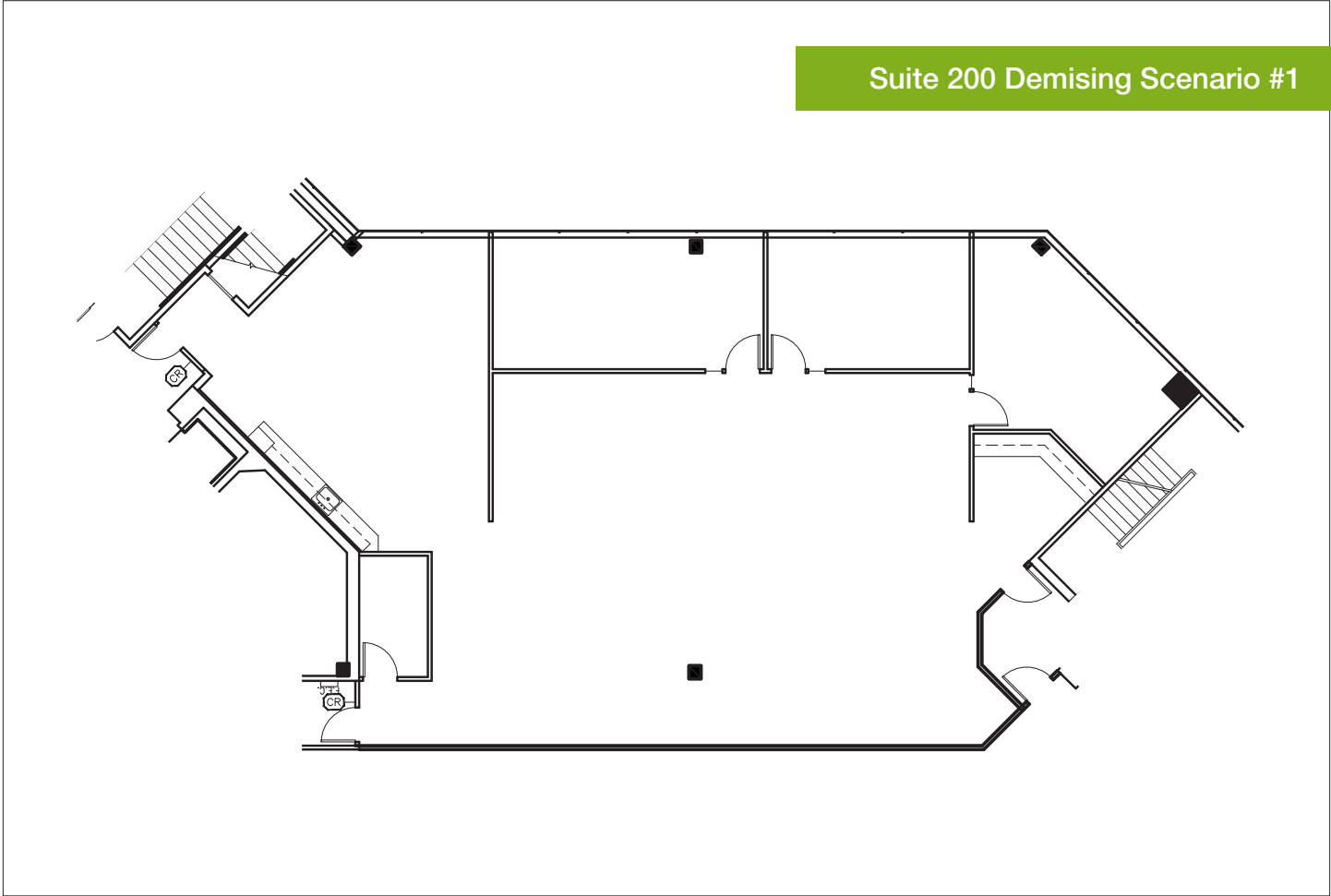



Mike George
 +1 425 586 5618
 mgeorge@nai-psp.com

Scott Sulman
 +1 425 586 5647
 ssulman@nai-psp.com

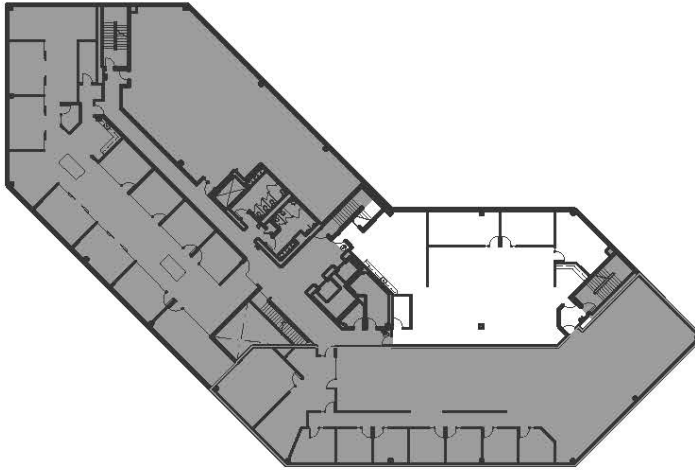


Suite 200 Demising Scenario #1





SUITE 3/220
3,762 RSF



OWNED AND MANAGED BY:

FOR MORE INFORMATION, CONTACT:

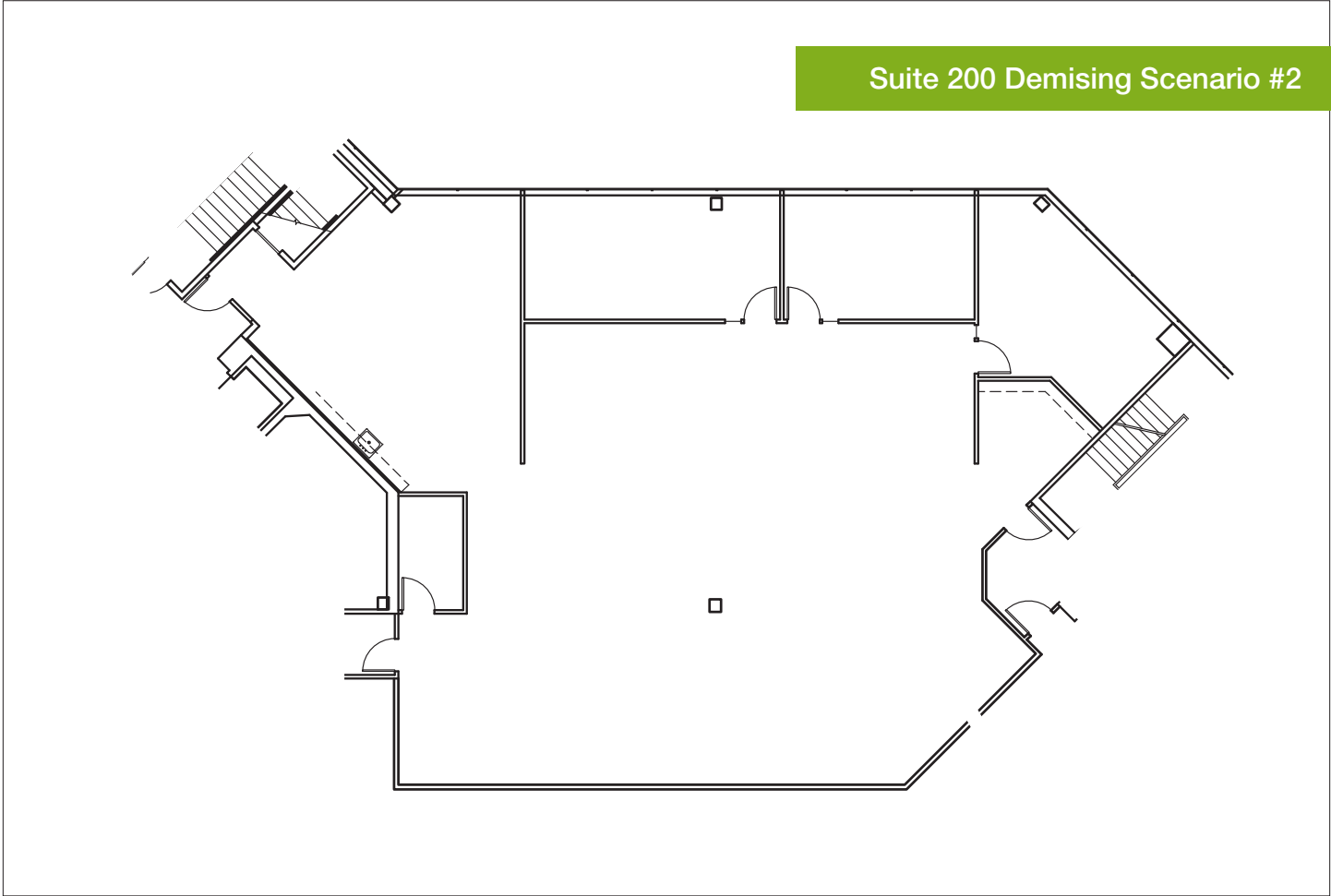



Mike George
+1 425 586 5618
mgeorge@nai-psp.com

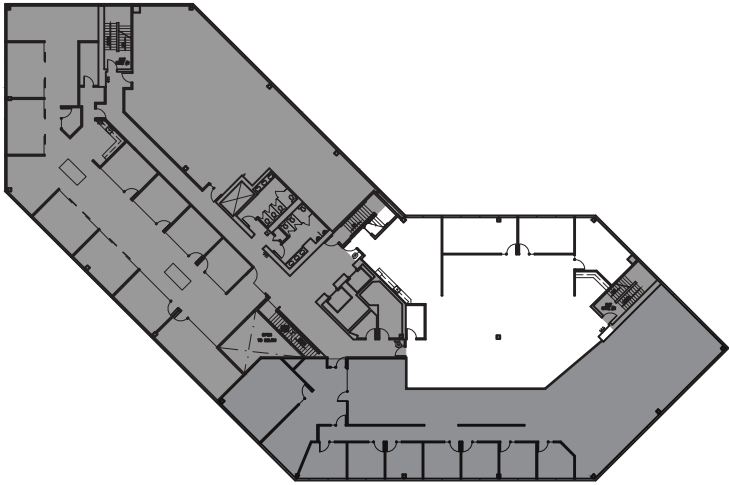
Tony Rona
+1 425 586 5634
trona@nai-psp.com



Suite 200 Demising Scenario #2

SUITE 3/220
 4,397 RSF



OWNED AND MANAGED BY:

FOR MORE INFORMATION, CONTACT:

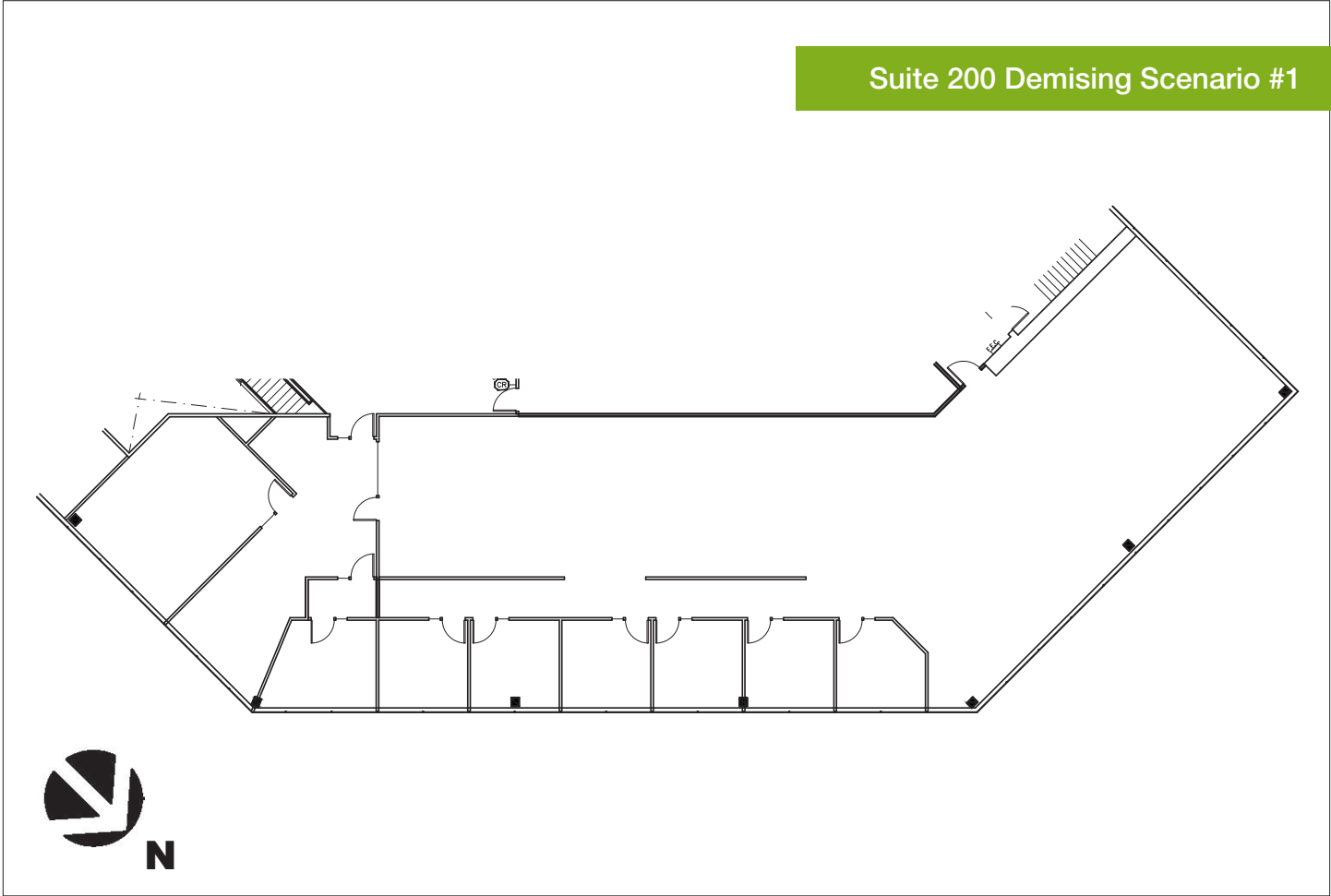



Mike George
 +1 425 586 5618
 mgeorge@nai-psp.com

Tony Rona
 +1 425 586 5634
 trona@nai-psp.com

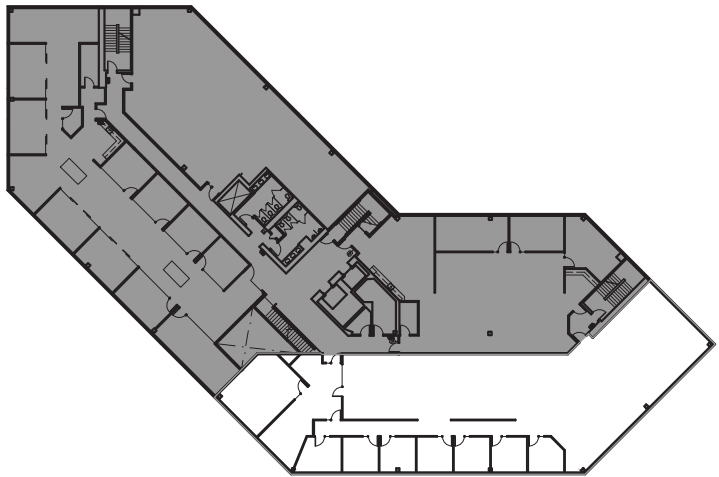


Suite 200 Demising Scenario #1





SUITE 3/210
6,623 RSF



OWNED AND MANAGED BY:

FOR MORE INFORMATION, CONTACT:

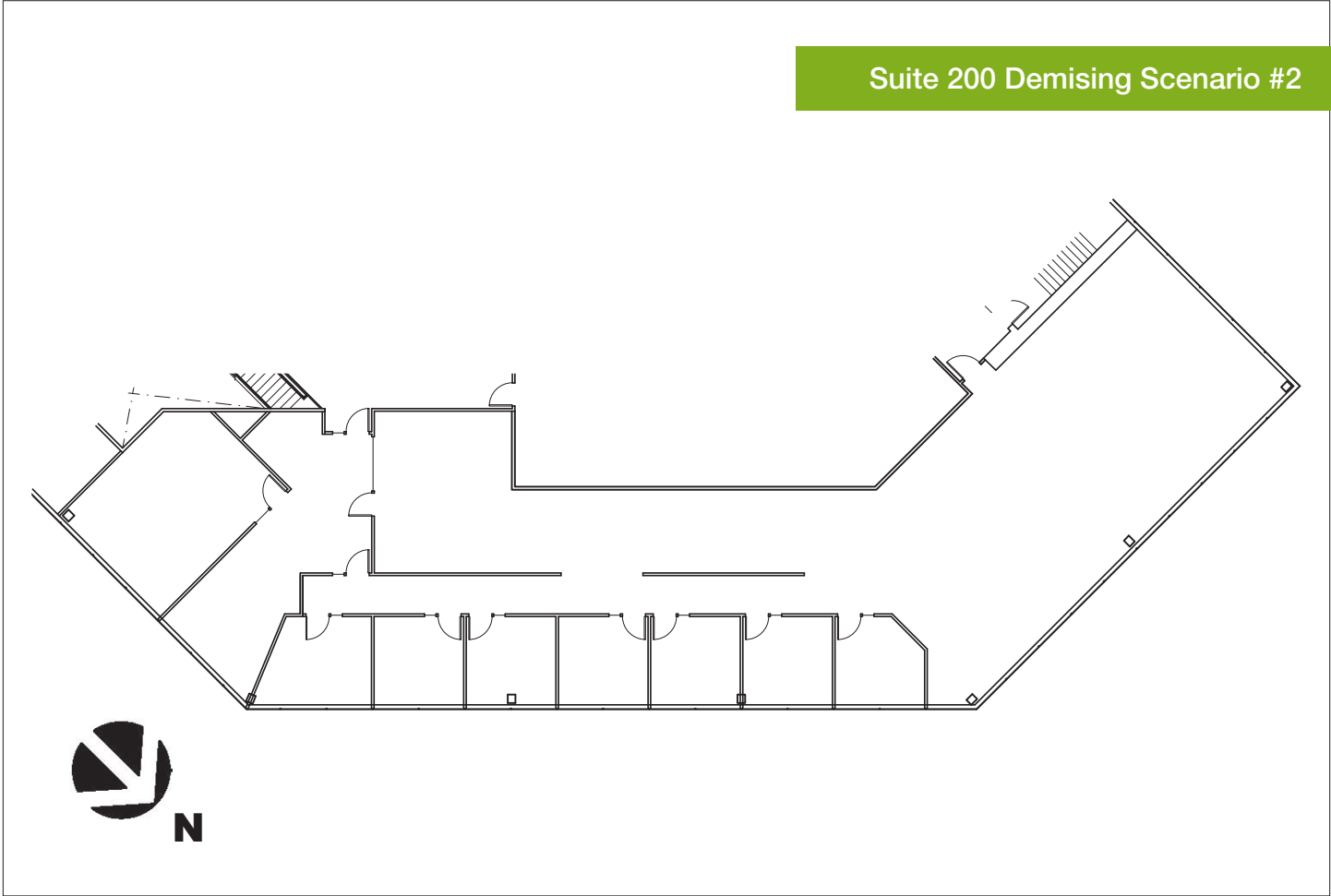



Mike George
+1 425 586 5618
mgeorge@nai-psp.com

Tony Rona
+1 425 586 5634
trona@nai-psp.com



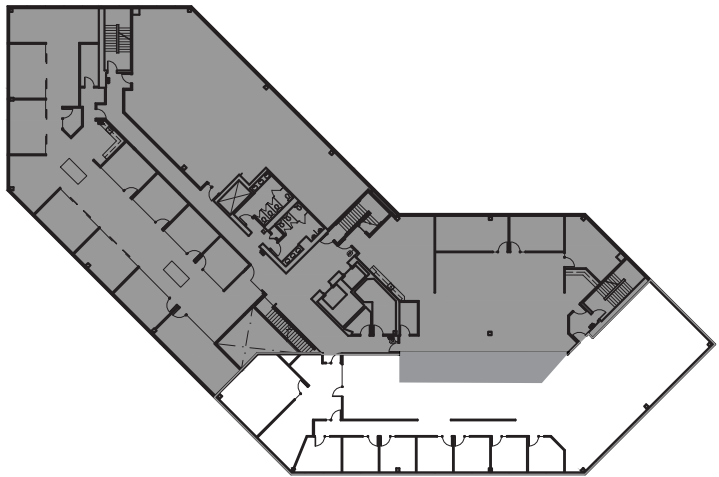
Suite 200 Demising Scenario #2





SUITE 3/210

5,988 RSF



OWNED AND MANAGED BY:

FOR MORE INFORMATION, CONTACT:



Mike George
 +1 425 586 5618
 mgeorge@nai-psp.com

Tony Rona
 +1 425 586 5634
 trona@nai-psp.com

